



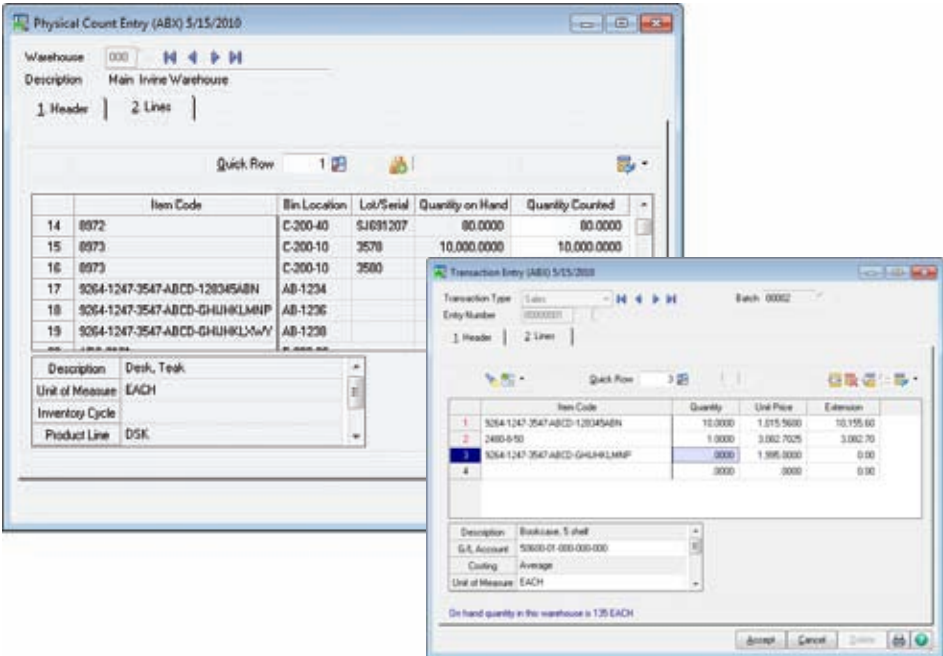
# Sage 100 ERP

## Inventory Management

Sage 100 ERP (formerly Sage ERP MAS 90 and 200) Inventory Management provides precise control and safeguarding of your inventory. Rely on timely and accurate inventory information from location and movement to valuation. Access accurate and meaningful information the way you want to see it on receipt of goods, movement of goods within or between locations, and the sale, removal, or other disposition of goods. Utilize kitting capabilities, lot and serial tracking, and the precise valuation and status of goods remaining in inventory at any point in time. Sage 100 ERP Inventory Management will be the cornerstone of your manufacturing and distribution operations.

Inaccurate inventory counts can cost you sales and delay shipments past the promise date. Out-of-stock items as well as overstocked items in inventory can be devastating to your business. Additionally, an overstated or understated inventory valuation can result in incorrectly reported assets within your financial statements.

Inventory Management offers comprehensive reporting capabilities to keep you on top of inventory status. Generate reports on item pricing, stock status, detailed sales history, backorder information, reorder points and recommendation, valuation, turnover, sales analysis, and much more. And adding the Business Alerts module can keep your staff on top of quantity changes to critical inventory items to keep stocking levels precisely where you want them. Properly used, the Inventory Management module can help bring about the formulation of new or improved purchasing policies, sales policies, pricing methods, and even enhanced customer service. Inventory Management could also provide your company with an additional edge over competitors that are unable to access the same strategic information.



### BENEFITS

- Streamline workflow with dual grid data entry
- Manage multiple warehouses more efficiently
- Establish and utilize comprehensive pricing
- Accurately track inventory costs
- Reduce time spent conducting Physical Counts
- Increase productivity using batch entry
- Utilize up to 30 alphanumeric characters for smart part numbers
- Efficiently make Standard Cost Adjustments
- Accurately track \$0 samples or vendor overruns
- Pay commission rates by item
- Track warranty information
- Unlimited transaction history

Manage your inventory more efficiently using upgrade-proof personalized screens, smart part numbers or item codes, and powerful physical count and restocking features.



## Features

<b>Multiple Warehouses</b>	A separate inventory can be maintained at any number of locations. In addition, items can be transferred between warehouse locations.
<b>Flexible Item Numbers</b>	Accurately identify items using up to 30 alphanumeric characters according to the needs of each of your companies. Embed meaningful information in smart part numbers such as UPCs, a vendor's number, recycling codes, special handling requirements information, and more.
<b>Physical Count</b>	Inventory can be physically counted without interrupting the normal Sales Order Entry process. Physical Count Worksheets simplify the physical count process and speed data entry. A variance report provides data that highlights the difference between current physical count and the count shown in the system.
<b>Alias Item Numbers</b>	Assign alias item numbers to each customer and vendor. Alias items permit you to type alias item numbers in the Purchase Order and Sales Order modules, allowing the system to find regular item records and stock status. All alias item numbers print on invoices and purchase orders.
<b>Sales Kit Processing</b>	Groups of items priced and sold together can be defined as sales kits. A single-level bill of components can be defined for each kit. The Sales Kit Listing, Sales Kit Where-Used Listing, and Costed Sales Kit Report are available. Sales kits can be entered during order entry to automatically explode the components.
<b>Comprehensive Pricing and Costing Methods</b>	Detailed price schedules based upon customer price levels and the quantity sold can be created for each item. Prices can be calculated as a discount of the standard price or markup of the standard cost and can be calculated based on standard cost, average cost, LIFO, FIFO, and lot/serial methods. Sales promotions and customer contract pricing may also be established. Standard, last, and average costs are maintained for each item regardless of costing method.
<b>Transaction History</b>	A detailed history of all inventory transactions can be retained indefinitely, and a transaction audit trail can be produced for a specified date range.
<b>Bar-Code Printing</b>	Inventory labels with bar codes can be printed for inventory items. Both Code 39 and Code 128 bar-code formats are supported for a variety of printers.
<b>Reordering</b>	The Reorder Report lists stock on hand that has reached a specified reorder point (which is unique to each item at each location). The suggested reorder quantity can be based upon an economic order quantity, maximum stock quantity, or reorder point.
<b>Commission Method</b>	Commission on each item can be calculated using different methods. Commissions can be based upon percentage of price, percentage of cost, or percentage of gross profit plus a base commission amount.
<b>Item Delete/Renumber/Merge</b>	You can delete, renumber, or merge existing item numbers using wildcard characters to mask selected groups of item numbers. All changes are recorded in a Delete/Renumber/Merge log. There is an Item Masterfile Audit Report that allows you to review any changes, deletions, or additions.
<b>Drill-Down From Item Inquiry</b>	View inventory items in sales history and drill down to all invoices for that item and a specific customer. Details include invoice number, invoice date, quantity, and price.
<b>Unlimited Vendors Per Item</b>	The lookup displays the last purchase price of an item, the lead time (based on the date of the last purchase order compared with the date of the last receipt), and available quantity price discounts.
<b>Warranty Tracking</b>	The warranty expiration date for items, optionally calculated on shipment or invoice date, prints on invoices and packing slips for your customers.
<b>Lot/Serial Tracking</b>	Items may be tracked by lot or serial number. This helps improve quality while providing an audit trail to the source purchase order or work order.